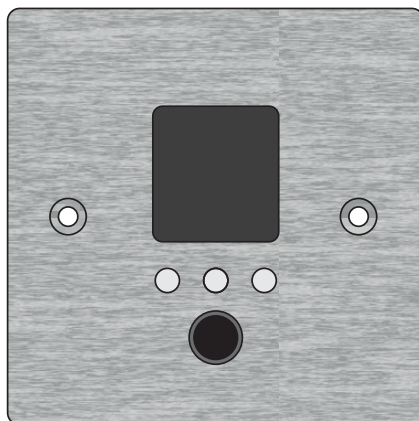


E11EVEN

///SOUND BY DAS AUDIO

User's Manual

WP-1 WALL PANEL



Deliver the Nightclub Sound Experience we all Deserve

www.11sound.com



Before operating the device, please read the "Safety precautions" section of this manual.

CONTENTS

| | |
|---------------------------------|----|
| SAFETY PRECAUTIONS | 3 |
| DECLARATION OF CONFORMITY | 4 |
| WARRANTY | 5 |
| INTRODUCTION | 6 |
| SPECIFICATIONS | 7 |
| WORKING WITH WP-1 UNITS | 8 |
| PRESET CALL | 11 |
| GAIN CHANGE | 12 |
| ROUTING CHANGE | 13 |

SAFETY PRECAUTIONS

Terminals marked with the lightning symbol carry electrical current of sufficient magnitude to constitute risk of electric shock. Use only high quality cables with plugs pre-installed. All other installation or modification should be performed only by qualified personnel. This symbol, wherever it appears, alerts you to the presence of un-insulated dangerous voltage inside the enclosure - voltage that may be sufficient to constitute a risk of shock. This symbol, wherever it appears, alerts you to important operating and maintenance instructions in the accompanying literature.

Please read the manual.

Caution:

To reduce the risk of electric shock, do not remove the top cover (or the rear section). No user serviceable parts inside. Refer servicing to qualified personnel.

Caution: To reduce the risk of fire or electric shock, do not expose this appliance to rain and moisture. The apparatus shall not be exposed to dripping or splashing liquids and no objects filled with liquids, such as vases, shall be placed on the apparatus.

Caution: These service instructions are for use by qualified service personnel only. To reduce the risk of electric shock do not perform any servicing other than that contained in the operation instructions. Repairs have to be performed by qualified service personnel.

1. Read these instructions.
2. Keep these instructions.
3. Heed all warnings.
4. Follow all instructions.
5. Do not use this apparatus near water.
6. Clean only with dry cloth.
7. Do not block any ventilation openings. Install in accordance with the manufacturer's instructions.
8. Do not install near any heat sources such as radiators, heat registers, stoves, or other apparatus that produce heat.
9. Do not defeat the safety purpose of the polarized or grounding-type plug. A polarized plug has two blades with one wider than the other. A grounding-type plug has two blades and a third grounding prong. The wide blade or the third prong are provided for your safety. If the provided plug does not fit into your outlet, consult an electrician for replacement of the obsolete outlet.
10. Protect the power cord from being walked on or pinched particularly at plugs, convenience receptacles, and the point where they exit from the apparatus.
11. Use only attachments/accessories specified by the manufacturer.
12. Use only with the cart, stand, tripod, bracket, or table specified by the manufacturer, or sold with the apparatus. When a cart is used, use caution when moving the cart/apparatus combination to avoid injury from tip-over.
13. Unplug this apparatus during lightning storms or when unused for long periods of time.
14. Refer all servicing to qualified service personnel. Servicing is required when the apparatus has been damaged in any way, such as power supply cord or plug is damaged, liquid has been spilled or objects have fallen into the apparatus, the apparatus has been exposed to rain or moisture, does not operate normally, or has been dropped.
15. The apparatus shall be connected to a MAINS socket outlet with a protective earthing connection.
16. Where the MAINS plug or an appliance coupler is used as the disconnect device, the disconnect device shall remain readily operable.
17. Correct disposal of this product: The wheeled bin symbol indicates that this product must not be disposed of with household waste. Please refer to the WEEE page of this manual.



DECLARATION OF CONFORMITY

DAS Audio Group, S.L.

C/ Islas Baleares, 24 - 46988 - Pol. Fuente del Jarro - Valencia. España
(Spain) as E11EVEN Sound System´s supplier:

Declares that:

The following products: WP-1

Are manufactured in accordance with EMC Directive 2014/30/EU, in compliance with the following technical regulations: EN55103-1:2009, EN55103-2:2009 and in accordance with the Low Voltage Directive 2006/95/EC, in compliance with technical regulations: EN/IEC60065:2014

WARRANTY

All our products are warrantied against any manufacturing defect for a period of 36 months from date of purchase. The warranty excludes damage from incorrect use of the product.

All warranty repairs must be exclusively undertaken by the factory or any of its authorised service centers.

To claim a warranty repair, do not open or intend to repair the product.

All the details related to the warranty (such as extended warranties) can be found in the SUPPORT section on our website: **www.11sound.com**

INTRODUCTION

The WP-1 wall panel remote control, is compatible with iO-48 processors and 11-NET computer control software.

The WP-1 wall panel remote is designed to allow simple and intuitive remote control of specific parameters within iO-48 Audio processors.

The panel is designed to fit into a single-gang UK electrical wall box, such as a light switch recess, and is both powered and controlled by connecting it, using a single standard Ethernet cable, to a network switch / router, that is capable of providing PoE (Power Over Ethernet).

The WP-1 is programmed using the E11EVEN Sound by DAS 11-NET software, and can be set-up to allow control of one or more iO-48 processors, connected to the same network as the wall panel, allowing custom remote access to channel gains, routing (matrix) and mute status', and also allowing remote recalling of presets, if desired.

Once set-up, the WP-1 requires no technical knowledge to operate, allowing venue personnel to operate the device with ease, utilising its customisable full colour LCD display, illuminated push buttons and rotary control.

All screens can be custom set and labelled, by the install engineer, leaving staff with a clear, simple and easy to use remote, allowing them to adjust the configuration and volume of the sound system in multiple locations, throughout the venue.

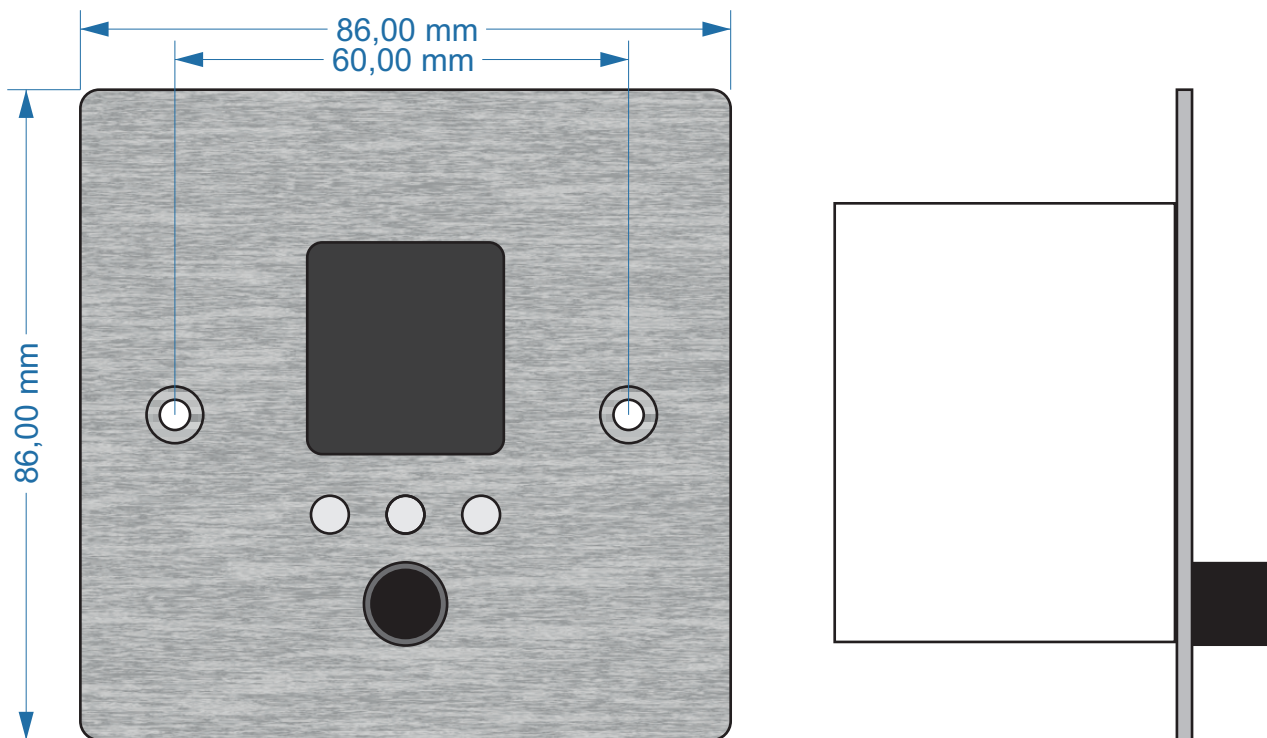
The WP-1 is the perfect accompaniment to any professional venue installation.

SPECIFICATIONS

The WP-1 wall panel control is designed to fit into a 45mm deep, standard single-gang UK electrical wall box, such as a light switch recess, and secured with two screws.

- Height, depth and width specifications are shown below
- Screen: Colour 128x128 pixel LCD
- Controls: 3 illuminated push buttons and 1 rotary control
- Connection: Standard RJ45 Ethernet port, requiring PoE (Power Over Ethernet)

NOTE: The WP-1 has been tested with a Netgear GS108PE and we recommend the use of this PoE router.



WORKING WITH WP-1 UNITS

To set-up and configure the WP-1, a computer running either Microsoft Windows or Apple Mac OS with 11-NET installed, will be required, along with a network switch / router, capable of providing PoE (Power Over Ethernet) and CAT5 (or greater) Ethernet cable.

11-NET is available to download from the 11sound webpage.

Save the downloaded file to a known location on your computer and install the software from there by double-clicking on it.

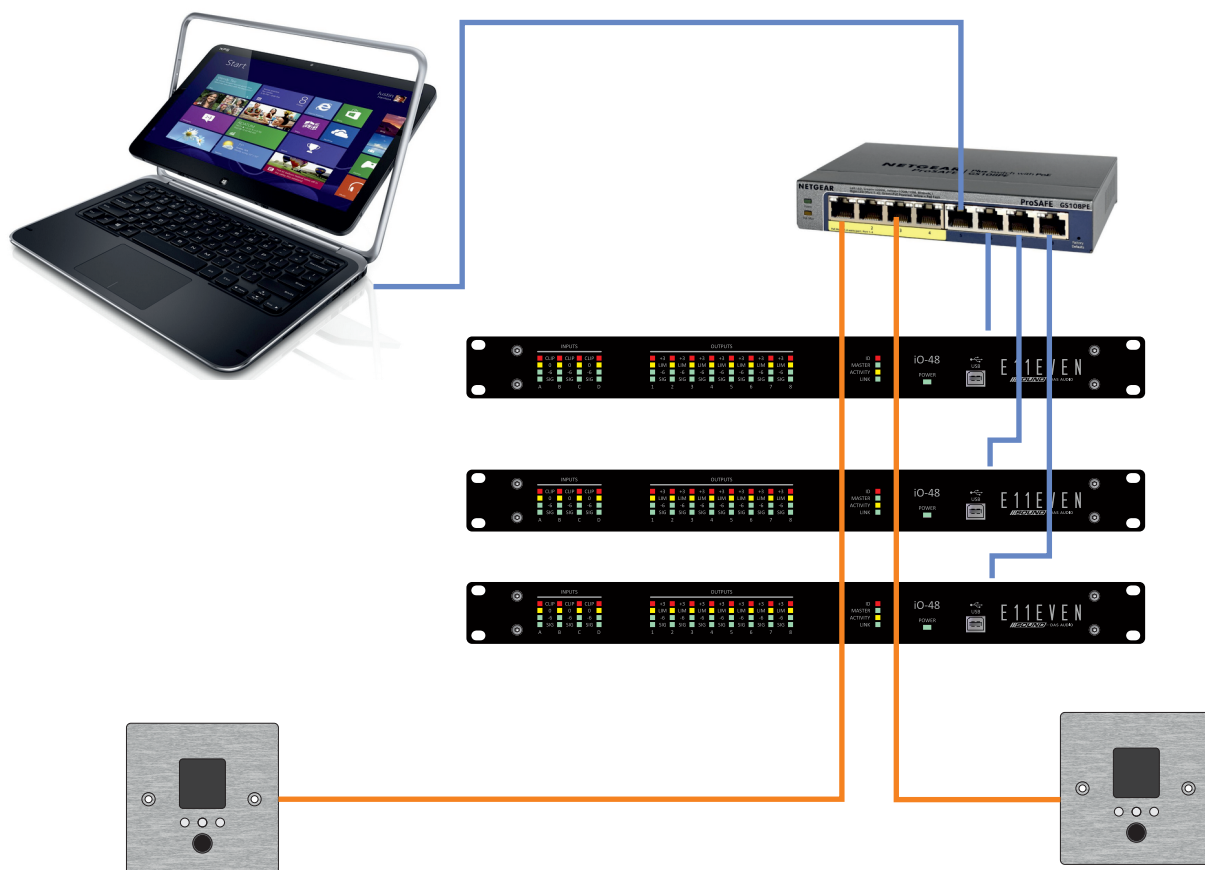
Your computer may warn you or ask you about running the installation file - accept / ignore any warnings!

Windows user should select the 'More Info' link from within the warning dialogue box to proceed. Read and follow the on-screen instructions to complete the installation. Various shortcuts will be placed on your computer allowing you to launch the software from there.

The iPad version of 11-NET is available from the Apple app store.

If you are unfamiliar with the 11-NET software, a user manual is available to download, in PDF format, from the 11sound website.

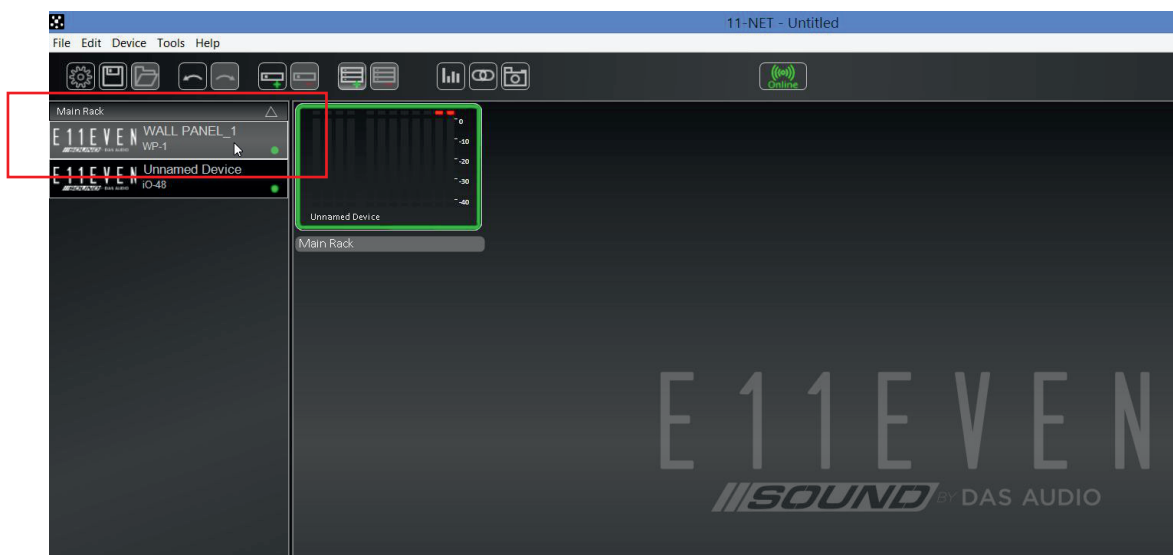
NOTE: The remainder of this manual presumes you have some prior knowledge of using 11-NET



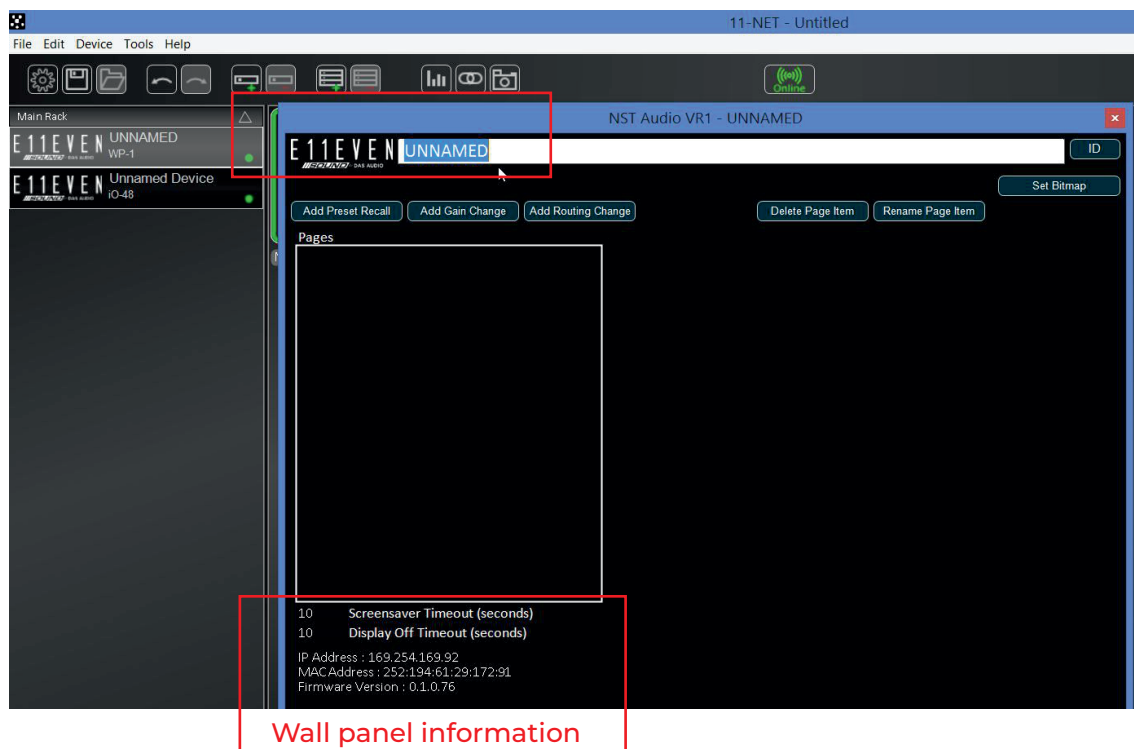
Each Wall Panel needs to be configured via 11-NET software.

Remember that the panel needs a connection over ethernet form a PoE switch.

Once the panel has been connected to the network, the unit will appear on the left menu as a standard device when going ON-LINE:

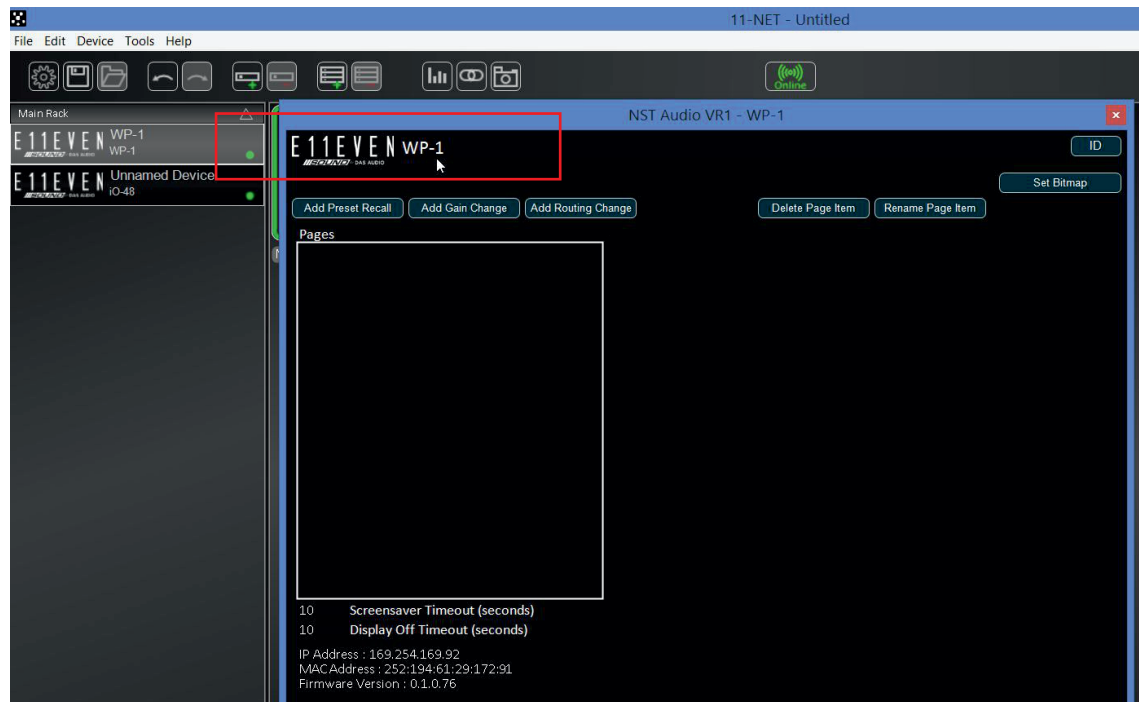


The Wall Panel can be re-named on the software.



Wall panel information

In this case the selected name for the Wall panel is WP-1.



These are the Wall Panel Functions adjustable by the user (via 11-NET):

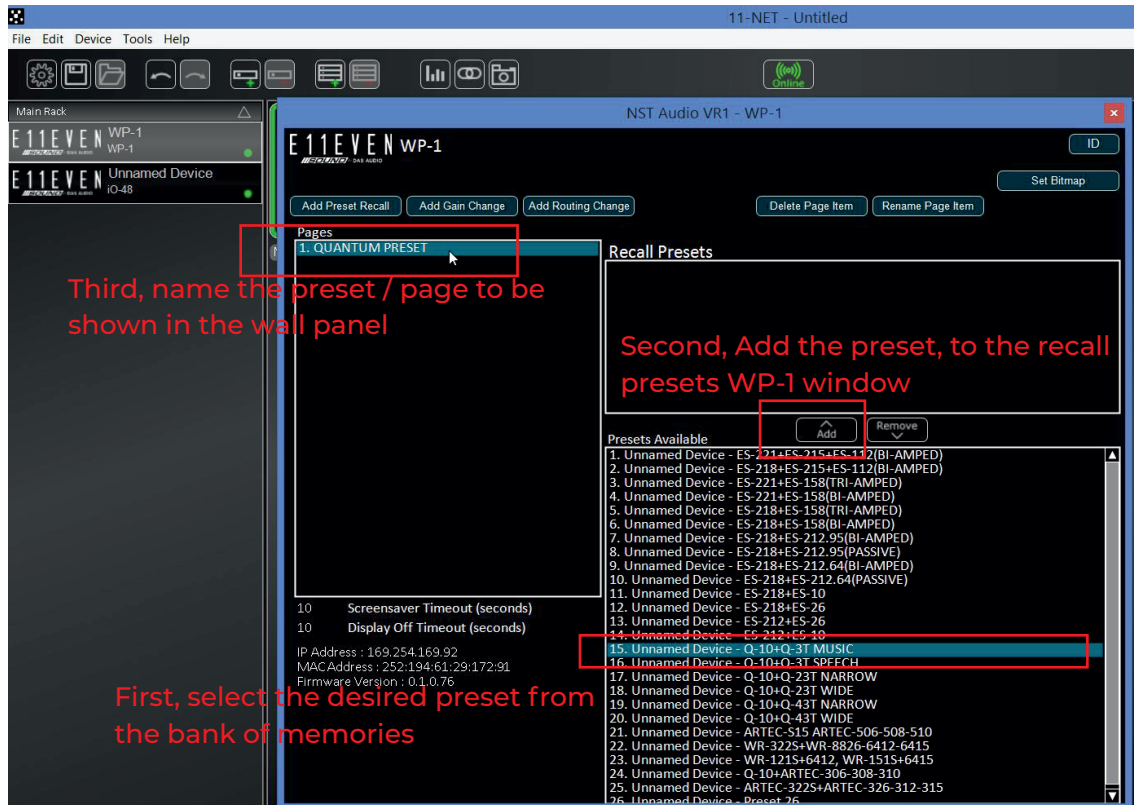
- Preset/memory RECALL
- GAIN change
- ROUTING Change

Note: all the previous functions are related or linked to one or various existing processor(s) iO-48 in the same physical network.

PRESET RECALL

The WP-1 can be used to recall different presets or memories from existing processors in the network.

Obviously as a previous step the presets or memories need to be created and stored in the processors.



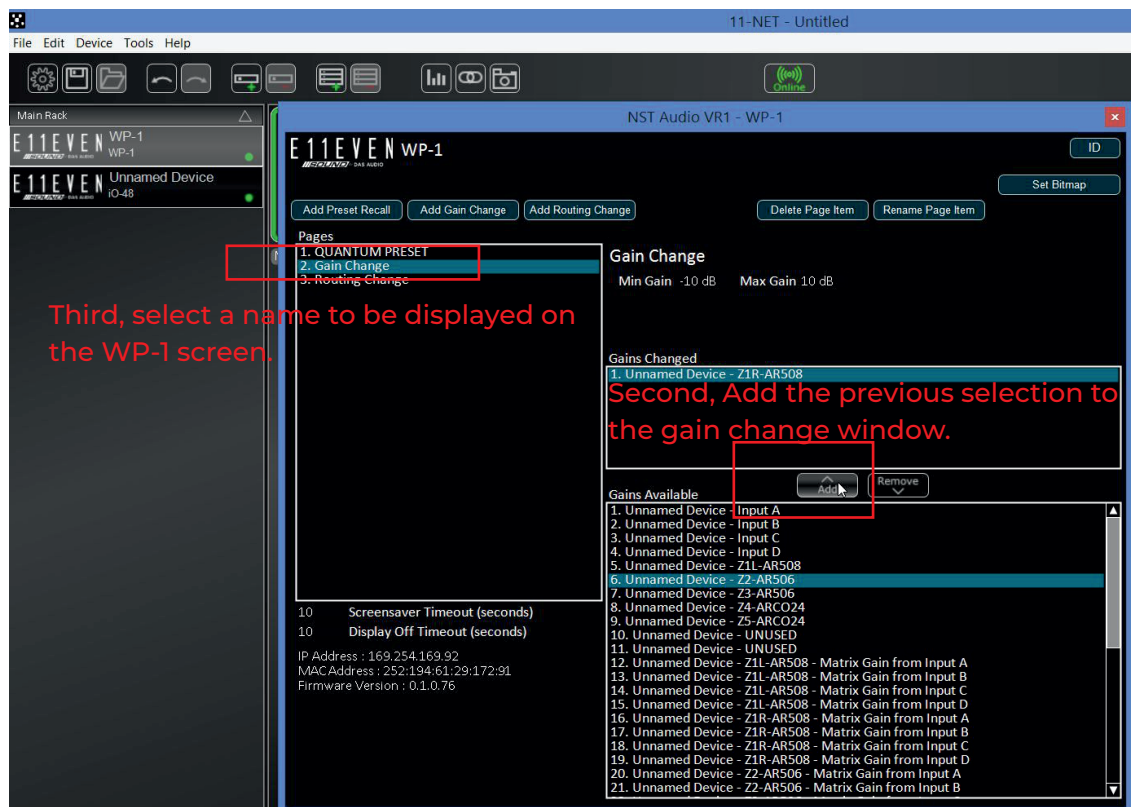
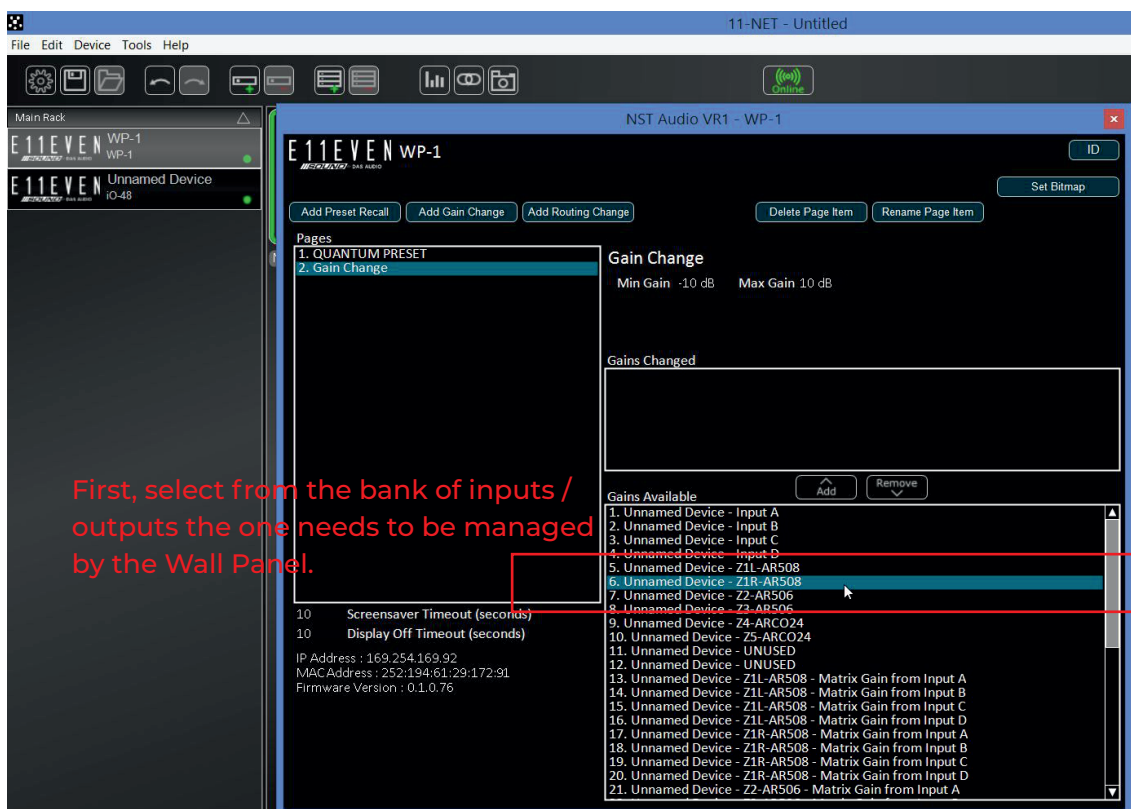
MUTE and PRESET RECALL

The WP-1 can be used to recall a muted preset in order to avoid the sound system reproducing any sound.

The user should store the same preset twice in different positions in the bank of memories. One preset should have the inputs unmuted, and the other preset should be stored with the inputs or outputs muted.

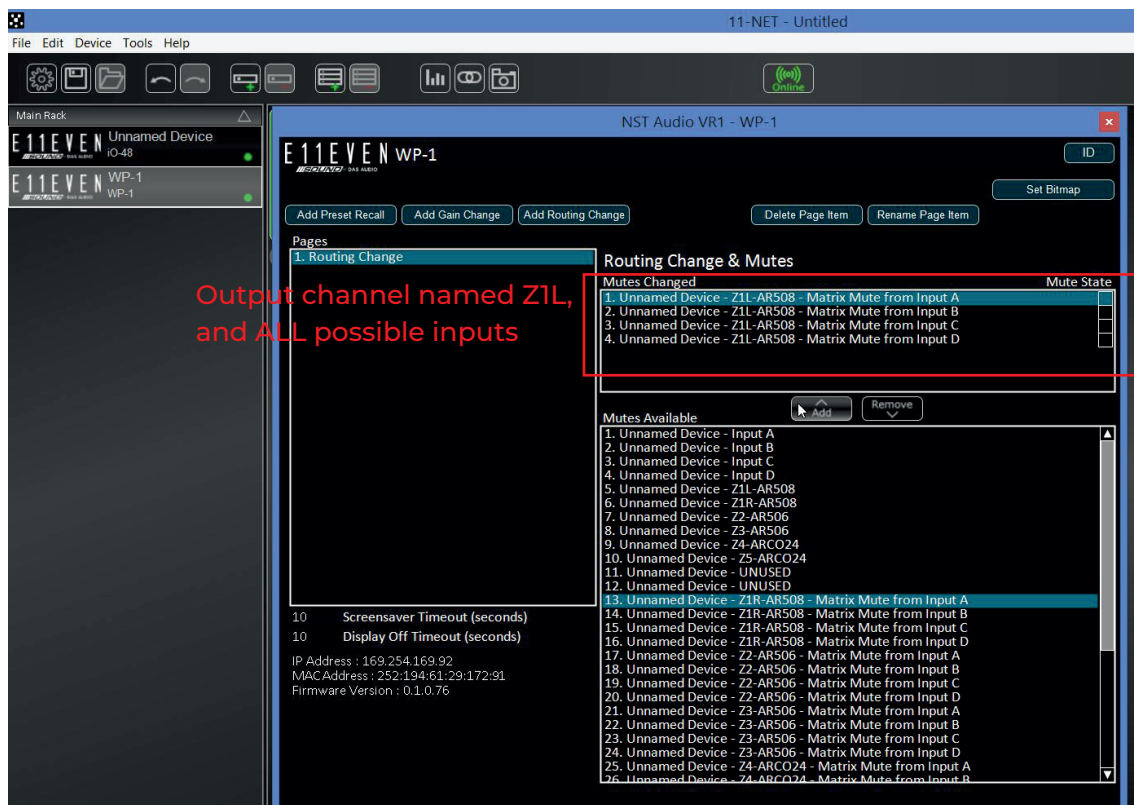
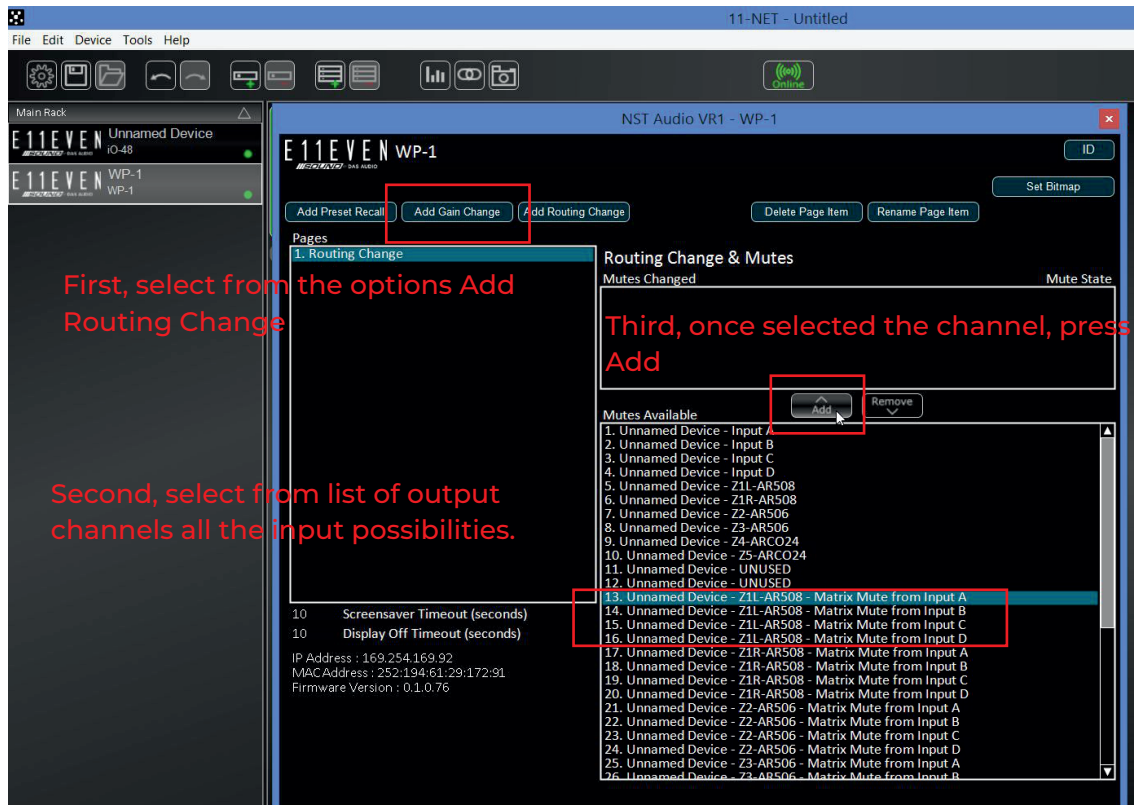
GAIN CHANGE

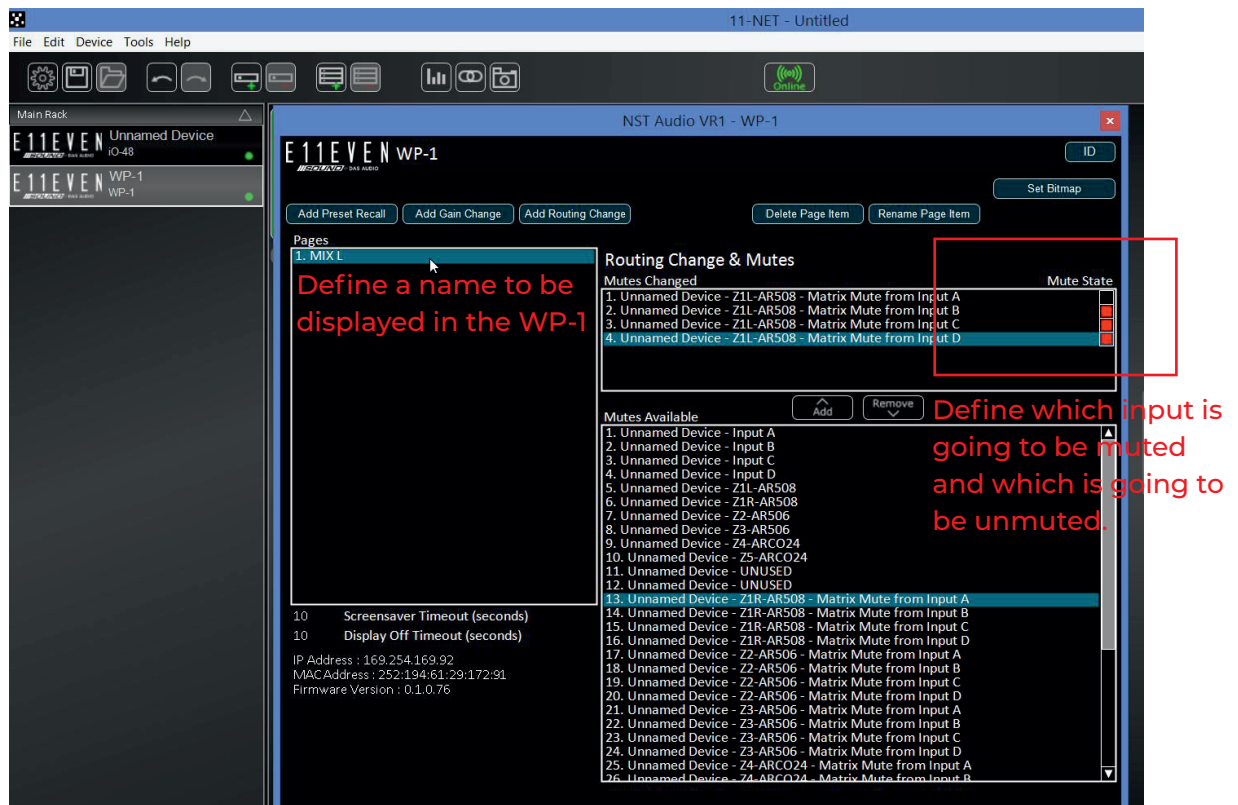
The WP-1 can be used to adjust levels of the different inputs/outputs available in the network.



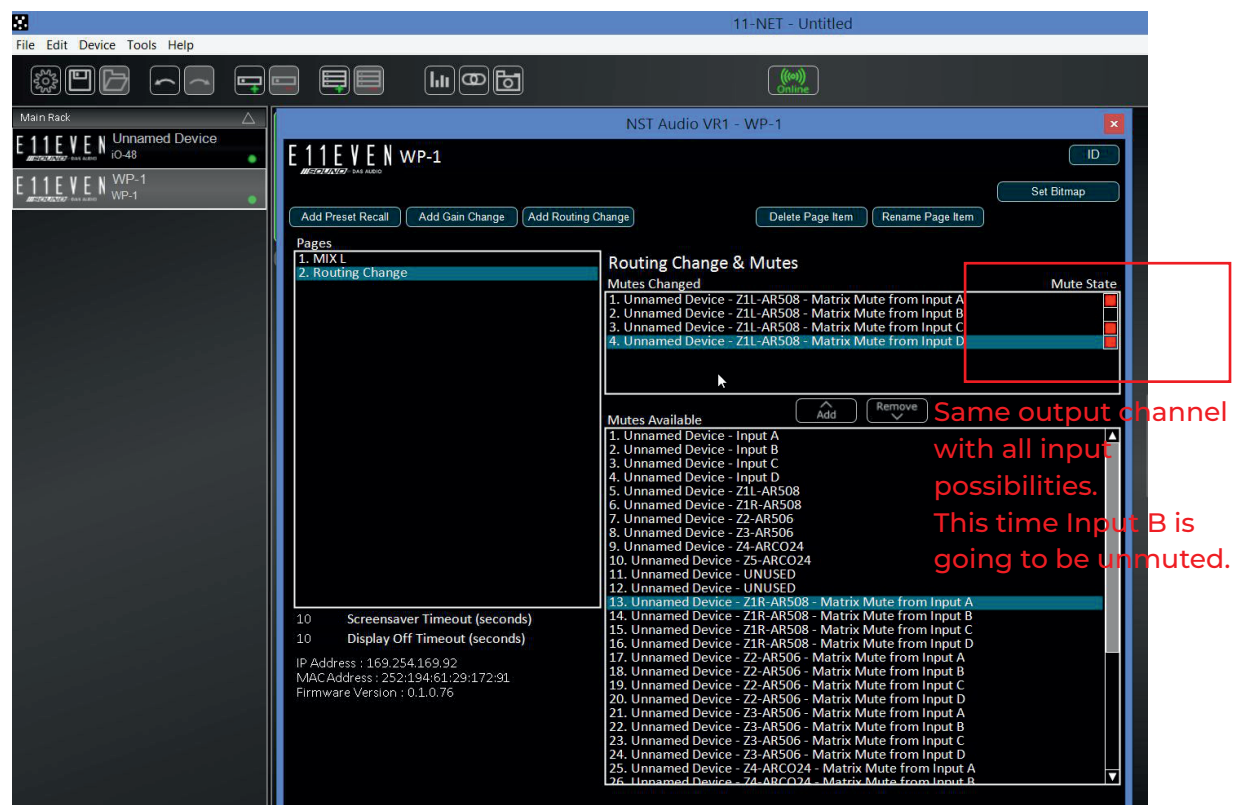
ROUTING CHANGE

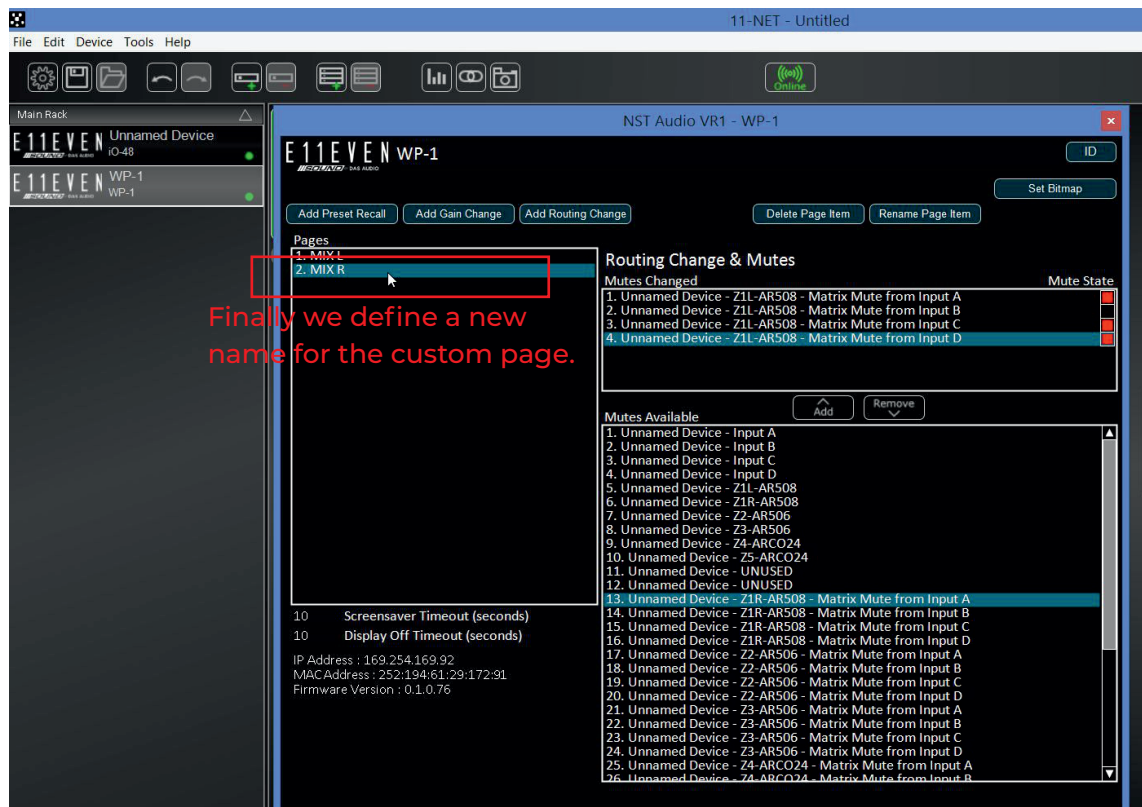
The WP-1 can be used to select from the input matrix which channels are feeding the outputs.





We have created a custom page for the WP-1 that makes the output channel Z1L of the processor to be feeded by input A. Now we are going to repeat the process and create another state to feed the same channel with input B.





In this sample we have two different “states” for the selected Z1L output channel. In state MIX L, the input channel is A, and in the state MIX R, the input channel is B.

E11EVEN

///SOUND BY DAS AUDIO