

up to
11.5 kW
11560 W

DP-F Series amplifiers

Think dif-FIR-ently about amplifiers !

NEW



Ethernet Software Control

Internal DSP + FIR filtering

Stable at 2 Ω

70 V system compatible

Wide range AC tolerance

Four new models of amplifiers join the powerful DP Series of multi channel amps.

The new DP-F models have been engineered for mid sized venues, rental and touring applications. Enormous output power and stability at 2 ohms are features that already make DP amps special - but the new DP-F models also feature Ethernet control and the FIR DSP functionality already found in the DP-N series.

The DSP now has FIR filtering with 512 taps. This refined and powerful FIR filtering brings linear phase response to the system, resulting in a more controllable and faithful output.

DP-F series also feature a wide range AC power input and are happy with huge voltage fluctuations between 90 v and 260 v. In addition, DP-F series can drive 70 V line systems!

Think dif-FIR-ently about amps!



WHEN ARE THEY AVAILABLE?

DP-F SERIES

Shipping from **JAN 2022**

DP SERIES - AT A GLANCE

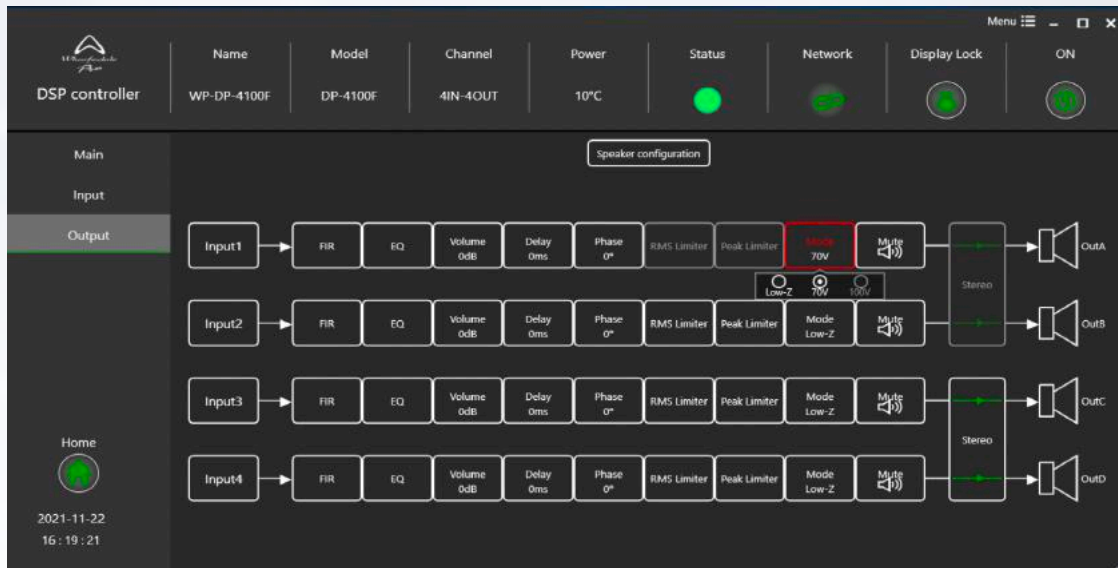
MODEL	SPEC	Available
DP-2200	No DSP	Current
DP-2200F	DSP + FIR + Ethernet control	New for Dec-21
DP-2200N	DSP + FIR + Dante™	TBA
DP-4035	No DSP	Current
DP-4035F	DSP + FIR + Ethernet control	New for Dec-21
DP-4035N	DSP + FIR + Dante™	TBA
DP-4065	No DSP	Current
DP-4065F	DSP + FIR + Ethernet control	New for Dec-21
DP-4065N	DSP + FIR + Dante™	TBA
DP-4100	No DSP	Current
DP-4100F	DSP + FIR + Ethernet control	New for Dec-21
DP-4100N	DSP + FIR + Dante™	TBA

WHAT MAKES THEM GREAT?

- ✓ Huge Class D power in a 1U rack
- ✓ Models with 4-channels
- ✓ Internal DSP with FIR filters
- ✓ FIR filtering with 512 taps
- ✓ Stable down to 2 Ω.
- ✓ 90 V to 260 V AC working voltage
- ✓ Ethernet control
- ✓ 70 V / 100 V system compatible

SOFTWARE CONTROL

Harnessing the power of the internal DSP



The supplied editing software gives a practical overview of all system parameters and DSP features within the DP-F amplifier. It is simple to monitor system performance and to edit the DP-F remotely. (The same software can also be used to control the Dante™ (DP-N) series of amplifiers from Wharfedale Pro.)

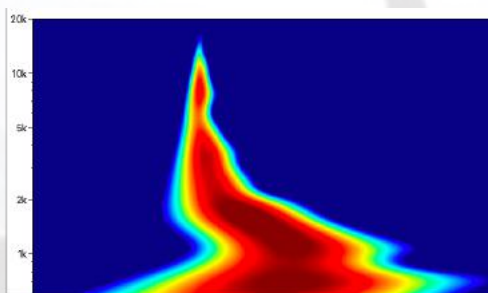
FIR FILTERS

FIR Filtering gives

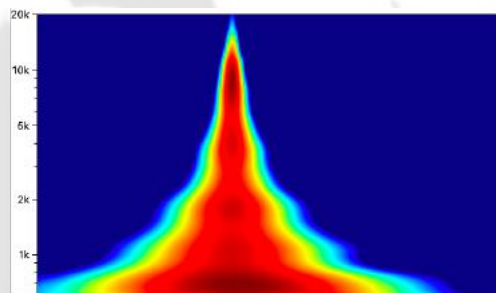
- 1) Independent control of magnitude and phase.
- 2) More detailed equalisation.
- 3) Optimization of frequency and power response.



Example system without FIR filtering



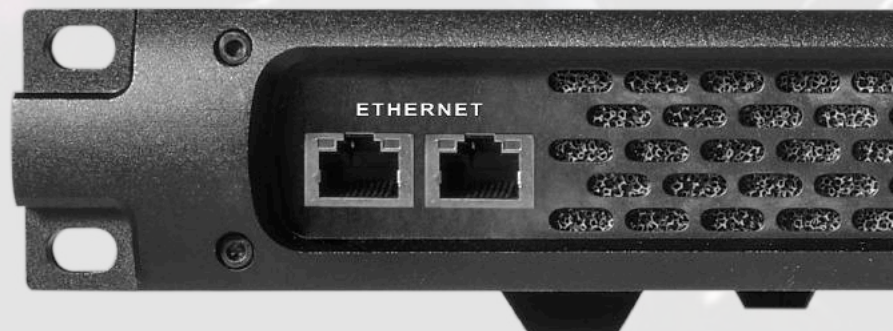
Example system with FIR filtering



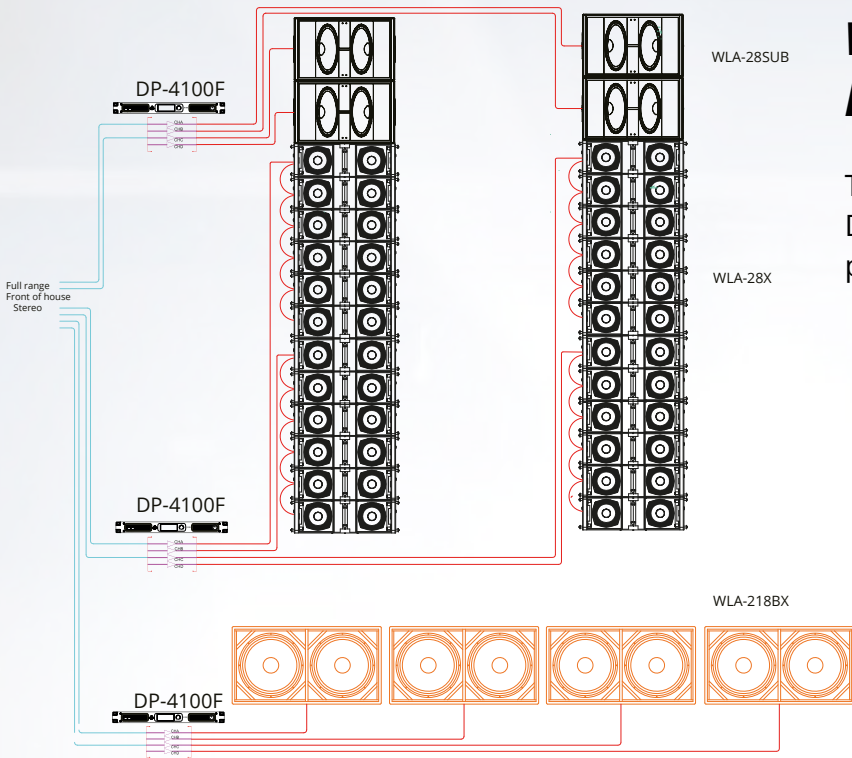
Ethernet Control

Connection to the computer is handled via Ethernet.

The supplied software gives complete control over all parameters and features of the DP-F Series amp.



SYSTEM EXAMPLES

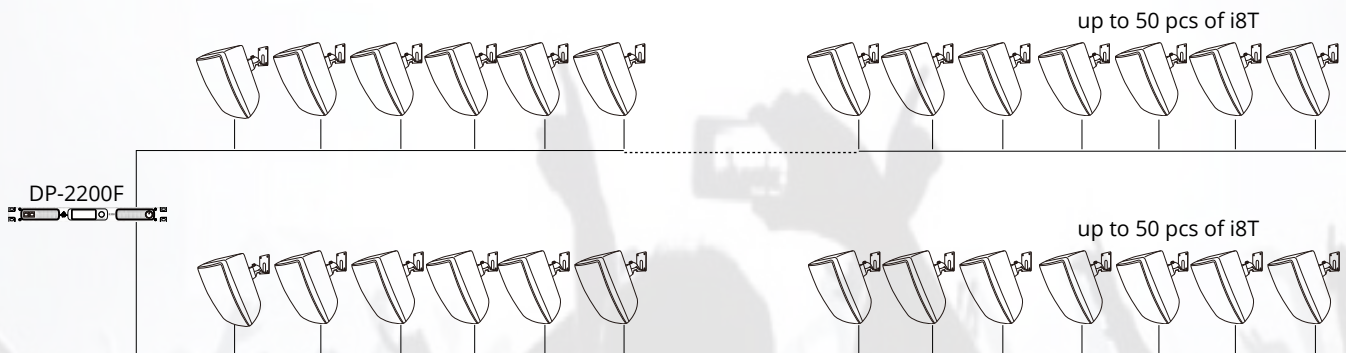


WLA-28X system with DP-4100F Amps

This huge system uses only 3 pieces of DP-4100F amplifiers with built-in FIR processing

i8T system with DP-2200F

In a 100 V high impedance system, DP-2200F can drive up to 100 pcs of i8T loudspeakers.



DP SERIES POWER OVERVIEW

	DP-2200 / N / F	DP-4100 / N / F	DP-4065 / N / F	DP-4035 / N / F
8 Ω / Stereo	2 x 2000 W	4 x 1000 W	4 x 650 W	4 x 350 W
4 Ω / Stereo	2 x 3400 W	4 x 1700 W	4 x 1100 W	4 x 595 W
2 Ω / Stereo	2 x 4760 W	4 x 2890 W	4 x 1870 W	4 x 1010 W
16 Ω / Bridge	1 x 4000 W	2 x 2000 W	2 x 1300 W	2 x 700 W
8 Ω / Bridge	1 x 6800 W	2 x 3400 W	2 x 2200 W	2 x 595 W
4 Ω / Bridge	1 x 9520 W	2 x 5780 W	2 x 3740 W	2 x 2020 W
100 V Hi-Z	2 x 3400 W	-	-	-
70 V Hi-Z	2 x 2400 W	4 x 1700 W	4 x 1100 W	-

SPECIFICATIONS

NEW

Model		DP-2200F	DP-4100F	DP-4065F	DP-4035F
Rated Power (THD=1%,Each channel works simultaneously with continuous sinusoidal 1 kHz)	8 Ω / Stereo	2 x 2000 W	4 x 1000 W	4 x 650 W	4 x 350 W
	4 Ω / Stereo	2 x 3400 W	4 x 1700 W	4 x 1100 W	4 x 595 W
	2 Ω / Stereo	2 x 4760 W	4 x 2890 W	4 x 1870 W	4 x 1010 W
	16 Ω / Bridge	1 x 4000 W	2 x 2000 W	2 x 1300 W	2 x 700 W
	8 Ω / Bridge	1 x 6800 W	2 x 3400 W	2 x 2200 W	2 x 595 W
	4 Ω / Bridge	1 x 9520 W	2 x 5780 W	2 x 3740 W	2 x 2020 W
	100 V Hi-Z	2 x 3400 W	-	-	-
	70 V Hi-Z	2 x 2400 W	4 x 1700 W	4 x 1100 W	-
Output RMS voltage		126.5 V	89.4 V	72.1 V	52.9 V
Maximum Input Level		8.7 Vrms(+21 dBu)(Default Gain)			
Default Gain (Rated Power,1 KHz)		24 dB	21 dB	19 dB	17 dB
Gain(Rated Power,1 KHz)		24 dB~42 dB	21 dB~39 dB	19 dB~37 dB	17 dB~35 dB
THD+N		Typical value:0.05% (10% Rated Power, 8 Ω)			
Cross-Talk		≥90 dB (20 Hz-1 KHz, Below Rated Power, 8 Ω)			
Frequency Response		Typical value:+0,-0.5 dB (10% Rated Power, 20 Hz-20 KHz, 8 Ω)			
Input Impedance		20 kΩ (Balanced),10 kΩ (Unbalanced)			
Damping Factor		≥1000 (20 Hz-200 Hz, 8 Ω)			
SNR		≥105 dB (Default Gain, A weighted,20 Hz-20 KHz, 8 Ω)			
Main Power		90~260 VAC,50/60 Hz			
Protection		Power under-voltage protection, Amplifier output DC protection, Thermal Protection, Temperature Power Control, Overload Power Control			
Size (W×H×D)		483 x 45 x 376 mm			
Net Weight		9.3 Kg	9.1 Kg	9.1 Kg	8.0 Kg



Errors and omissions excepted (E&OE) : Wharfedale Pro : 2021

WWW.WHARFEDALEPRO.COM